

Poynton

Pick up your **FREE** trail map
at Poynton Civic Hall

7 Crowns - Can you find them all?

Platinum Jubilee Trail



SCAN HERE

...TO DOWNLOAD THIS
PAGE TO READ AT HOME!

PLUS!!

SEE MANY MORE
PHOTOS, NEWSPAPER
ARTICLES AND
DOWNLOAD
POYNTON PUZZLES!

**Poynton
Puzzlers**



OR GO TO...

<https://bit.ly/3rSUPWh>

Anagram letter



SEE MORE PHOTOS
of Poynton in 2000-10, plus
memories from the Poynton
community, by scanning
the QR code top right, or
going to the web
address given.

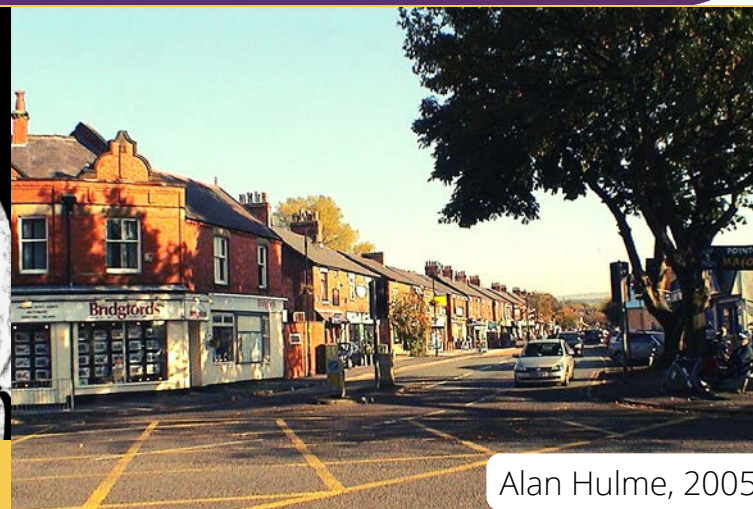
The 2000s

The Golden Jubilee

After a difficult decade in the 1990s, the new Millennium did not start well for the Queen. In early 2002, her sister Margaret died and only 7 weeks later, she lost her mother. However, the Golden Jubilee was marked with large events in London and over 1 million people attended the parade and flypast in Pall Mall. There was a huge party at Buckingham Palace dubbed 'The Party at the Palace', headlined by Paul McCartney and Brian May. The Queen and Prince Philip travelled to the Caribbean, Australia, New Zealand, Canada and all around the UK in her Jubilee year.



7.9.2003
Sunday Tribune
from the British
Newspaper Archive



Alan Hulme, 2005

The World in the 2000s

The new Millennium began with relief that the so called 'Millennium Bug' had not caused the chaos that had been feared. In 2001 however, the world reeled at the shocking attacks on New York and Washington on September 11th. The so-called 'War on Terror' followed, in Afghanistan and Iraq. There was an economic boom in the early 2000s and China and India's economies grew enormously, but a huge economic crisis followed in 2007-8, spreading from the USA. Other events included most of Europe entering the 'euro' in 2002 and the massive tsunami in the Indian Ocean which killed over 230,000 people in 2004. The growth of the internet contributed to globalisation during the decade, and social networking became the new way to stay in touch. Fashions included 'low rise' trousers and crop tops for women and 'Emo' culture became popular. 'Friends' was the most watched TV programme of the 2000s and 'Reality TV' took off, with programmes such as 'Big Brother'.

Poynton in the 2000s

Poynton Parish Council became Poynton Town Council in 2009, the same year as the Parish Plan was published. Poynton Show celebrated its 100th year in 2000 and there were many events to mark the new millennium, including tree planting, arts, music and drama festivals. Woodford Air Show was last held in 2001. In 2000, an automated public lavatory, located at the side of the post office, and fondly called 'The Tardis', was opened. In 2007, Roy Dudley and John Simpson had the idea of creating a model of Poynton c1900, at a time when the coal mines were in full production. This can now be seen at the Anson Engine Museum. Poynton was twinned with Erd, Hungary in 2003.

See photos of the completed scale model of Poynton by scanning the QR code on the Poynton Green) trail poster

Hungary in 2003.

♥ This Place Hockley and the Lady and Lord Pits

You are now in Hockley, an area of many points of historical interest. This picture shows Hockley in the 1940s, looking from Middlewood Road towards the junction with Park Lane.



The Roy Dudley Collection

The picture below shows the former Lady Pit winding engine houses in 1952. The building on the left still stands! If you walk slightly up Middlewood Road, you can see it on your left, signed 'The Old Pump House'. It is now offices. The taller building, which housed the Cornish Beam engine known as 'Big Ned', has since been demolished.



7.9.1953 - John Ryan

Same building,
70 years apart

Lady Pit
buildings
(disused)
1953

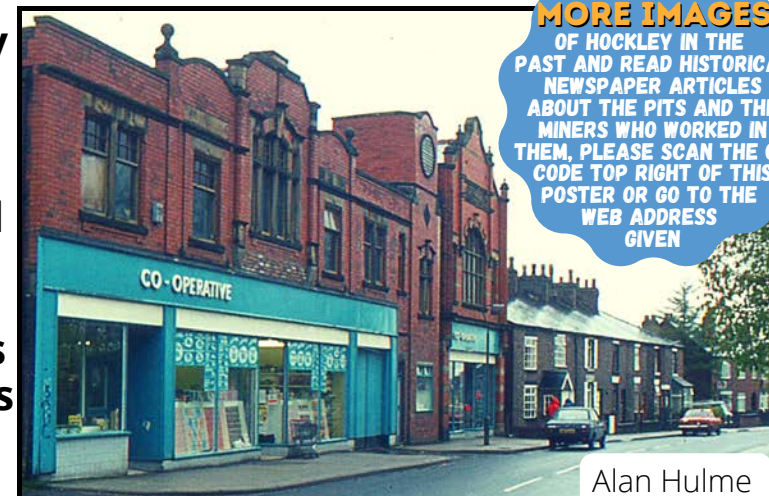
The miners formed 'self-help' societies to improve their own standards of living. An example was the 'Co-operative Society', formed in 1861. Originally based in 'Hockley Stores', in 1875 they moved further down Park Lane to this new building, seen below in 1985, when it was known as the 'Middle Co-op' or 'Cworp' as it was called by the locals! It was knocked down to build Homelyne House.

THE NEW CO-OPERATIVE STORE.—The contract of Mr. Samuel Howard, jun., builder, &c., Poynton, for the new co-operative store, was on Monday evening accepted by the committee of the society.

The site chosen is just below Hockley Chapel, on the opposite side of the road; the block will be 20 yards long by 11 wide, including a cottage to be built along with it. The store will comprise on the ground floor commodious shop room for groceries, also for drapery, and a room for the shopman; above there will be a large store room for the grocery department, store room for drapery, and a committee room.

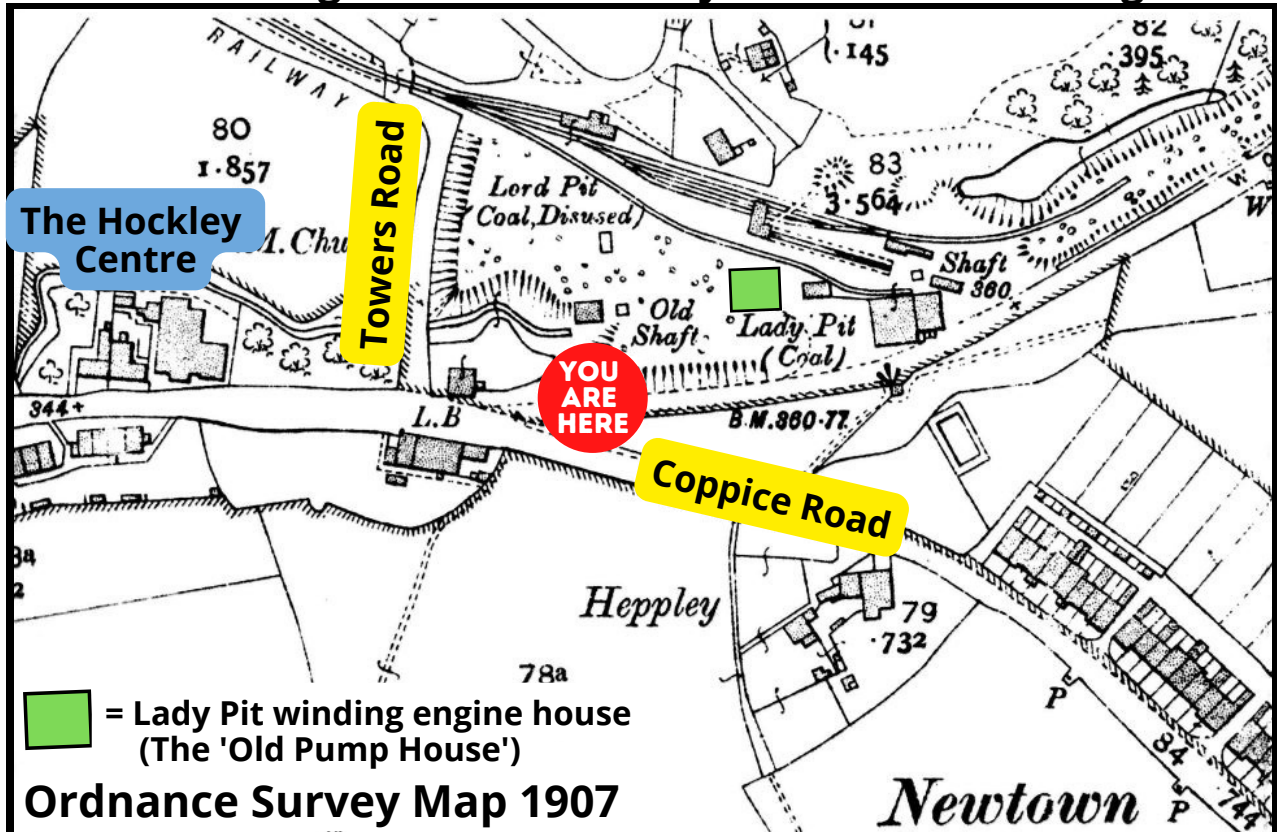
13.3.1875 - Hyde & Glossop Weekly News, and North
Cheshire Herald, from the British Newspaper Archive

**TO SEE
MORE IMAGES**
OF HOCKLEY IN THE
PAST AND READ HISTORICAL
NEWSPAPER ARTICLES
ABOUT THE PITS AND THE
MINERS WHO WORKED IN
THEM, PLEASE SCAN THE QR
CODE TOP RIGHT OF THIS
POSTER OR GO TO THE
WEB ADDRESS
GIVEN



Alan Hulme

If you look at the 1907 map below, you can see that Lady and Lord Pit were right next to where you are now standing.



Lady Pit and Lord Pit were sunk in the 1830s. Lord Pit was a major pumping station for the collieries by 1850. Work there ceased in around 1857 and in 1891 the old engine house was fitted up as a water tower for public water supply.

Coal mining is very dangerous work and sadly there were many deaths and injuries in and around the mines of Poynton. Consistent records were not kept, but the records that do exist give us an idea of the volume of deaths and injuries. In 1852 alone, 128 miners were injured and 2 died.

BEFORE YOU GO...

Take a
detour up
Coppice Road
to see these
wonderful
miners'
cottages,
which were
built in 1873
and 1874.



Ian Price drawing, Cheshire Life, 1980

The Miners Cottages at 'Newtown'

AND ON YOUR WAY... TO TRAIL POINT 6 - POYNTON GREEN Hockley Chapel

The Hockley Centre, now the meeting place of Poynton Christian Fellowship, was built in various stages between 1836 and 1896. A recent extension at the back was built in 2006. It was the church of the Hockley Westleyan Methodists.



Kath Marshall, 1981 photo

With huge thanks to Rainbow Trails with Rosie



for putting the trail together and Men in Sheds for making the crowns