

Poynton

Pick up your **FREE** trail map at Poynton Civic Hall

7 Crowns - Can you find them all?

Platinum Jubilee Trail



SCAN HERE

...TO DOWNLOAD THIS PAGE TO READ AT HOME!

PLUS!!

SEE MANY MORE PHOTOS, NEWSPAPER ARTICLES AND DOWNLOAD POYNTON PUZZLES!

Poynton Puzzlers



OR GO TO...

<https://bit.ly/3xUBAjd>

Anagram letter

N

SEE MANY MORE PHOTOS OF POYNTON IN THE 1960S, INCLUDING AN AMAZING CHESHIRE LIFE ARTICLE - 'UGLY DUCKLING VILLAGE'. BY SCANNING THE QR CODE TOP RIGHT, OR GOING TO THE WEB ADDRESS GIVEN



The Queen

In the 1960s, the Queen was bringing up her young family, and had her younger 2 children, Andrew and Edward, in 1960 and 1964.

In 1969, the family took part in a documentary called 'Royal Family', an intimate look at their daily life.



18 August 1962, The Illustrated London News, from the British Newspaper Archive

St George's Church in the snow, Cheshire Life, Mar' 1962

The World in the 1960s

The 'Swinging Sixties' are remembered for music (most notably The Beatles), mini skirts, bright colours and psychedelic patterns, and counter culture, with a relaxation of social norms. Overall, the 1960s was a decade of prosperity, there was an expansion of the middle class, and a proliferation of new domestic technology. There was a 'Space Race' between the United States of America and the Soviet Union. In 1961, the Soviet Union put the first man in space, and in 1969, the USA put the first man on the moon. Other notable events include the Cuban Missile Crisis in 1962, the assassination of John F. Kennedy in 1963, the Vietnam War (and protests against it), and England winning the World Cup in 1966.

Poynton in the 1960s

The population of Poynton was 7750 in 1961, and would rise to over 10,750 by 1971. In the 60s, the Vicarage Lane, Yew Tree Farm (Wimpey, or 'Tree'), Parklands and Deva Close estates were built. Poynton High School was opened in the mid 60s, Lower Park Primary in 1965, Vernon Infant School in 1966, and Worth Primary in 1969. The new Poynton Fire Station opened in 1968. The Social Centre (formerly the school) on Park Lane expanded its programme of events and activities.

This Place Brookfield Cinema

Ugly Duckling Village

AN EXPLORES THE PAST - AND THE FUTURE - OF POYNTON. PICTURES: CYRIL LINDLEY

Cheshire Life - March 1962

In the 1930s, local builder Richard Bailey and his wife built the Brookfield Cinema. The cinema opened in November 1938 - its first film was 'Rebecca of Sunnybrook Farm, starring Shirley Temple'.

The Bailey family had previously owned the cinema on Clumber Road (now St Pauls' Church). Brookfield cinema had 920 viewing seats (700 in the stalls, a large entrance hall on the ground floor, foyer on the first floor, and a 100 seat cafe. The building had an extendable stage, dressing rooms, and a large ballroom on the second floor. Two films were shown every week, and dances were held several times a week. Because of the RAF and US Army camps nearby, in the war, the dance nights were very popular and the village very busy.

Did you know? Cinemas were often called 'kinemas' from around 1910 until the 1950s!

SMALL KINEMA - BIG BUSINESS

Specialised Services Make it Poynton's Main Social Centre

MAIN centre of the social activity of Poynton, Cheshire, a township with a population of about 6,000 people, is the Brookfield cinema, café and ballroom, owned by a company of which Mr. H. C. Orr, of Coventry, is managing director. Manager is Mr. Trevor Taylor, secretary of South and East Lancashire branch C.E.A., who says the café and ballroom are not expected to show big profits, but the success of these departments from a social standpoint automatically reflects in the popularity of the 930-seater cinema.

In front of the building there is a service roadway, at each end of which there are "Café Open" announcements.

As the cinema is on the Manchester-London road, the Brookfield café attracts a passing trade, which comprises about 60 per cent. of the ordinary business of the café.

The café is on the first floor, and is entered by a staircase from the main foyer. It accommodates about 80 people, the rectangular tables being set for four persons. Although the table tops are a cream plastics material on a metal base and are hygienic and easily cleaned, white table cloths are always used. The low backed chairs have red leather seats. Near the entrance door there is a table on which there is a selection of periodicals for the use of patrons. The kitchen adjoins the café, the doorway being shielded by a large wooden screen.

Refreshments and meals can be obtained each day (except Sunday) from 10 a.m. to 10.30 p.m., coffee being served in the mornings, then three-course luncheons and teas. The pay desk is equipped with a self-acting cash register, the amounts of the checks handed in and the cash

balance being checked each day against the amounts on the register ribbon.

"We do not run to any set hours for a café trade," said Mr. Taylor. "We try to keep ourselves geared so that if a person comes in at 10 a.m. for a meal we can provide it. Similarly if a client in the evening asks for a meal, we fix him or her up basically with a three-course meal." Grills are served on request at any time of the day. Owing to the situation of the café on the main road, there is a considerable fluctuation in the day to day clientele.

"Our records show days when we have served 60 luncheons and on the days immediately following the number has dropped to 20. It speaks highly for our café staff that we can cater for 60 or 20 with little or no wastage. Because of the widely variable demand our arrangements are extremely flexible. Each day the kitchen staff plans to supply a minimum of 30 main meals, but always has a sufficient reserve of food in the 'frig' and store to enable it to put on appetising and quickly cooked "à la carte" meals such as fries, grills, omelettes, etc., with vegetables."

Customers for morning coffees number between 12 and 60 a day. The charge for coffee is 6d. per cup, tea 4d. per cup; afternoon teas average about 3s. Three-course luncheons are generally 3s. or 3s. 6d. Here is a typical 3s. luncheon menu: soup or fruit juice; meat pie or mince steak or breast of lamb, with chips, baked or boiled potatoes and carrots; sweet. For 3s. 6d. there is braised steak and onions; 3s. 9d. plaice or lamb chop; 5s. chicken.

The ballroom, situated on the upper floor and

Continued on page v

More sophisticated pastimes are practically unknown in the village. There is no "in" restaurant, no coffee bar, and the nearest cinema is five miles away. No wonder the people fling themselves wholeheartedly into making their own entertainment.

In 1947, the Bailey family sold the cinema to the Poynton and Worth Cooperative Society. The cinema continued to be popular in the 1950s. In 1957, the cinema closed, and was sold to Brookfield Garage Motors in the 1960s. The first floor became "La Primavera" Italian restaurant and dance floor. In the late 1970s, the lower floor became the Arena Gym. In 1999, the lower floor was 'The Foyer Cafe Bar and Landing restaurant', and in 2005, 'Bacalls' bar, In 2015, the building was knocked down and the new Aldi store was built.



Keith Calvert 2015



Rosie Deverell 2022

28th April 1955, Kinematograph Weekly, from the British Newspaper Archive

BEFORE YOU GO... ON YOUR WAY TO TRAIL POINT 3 - WOODSIDE

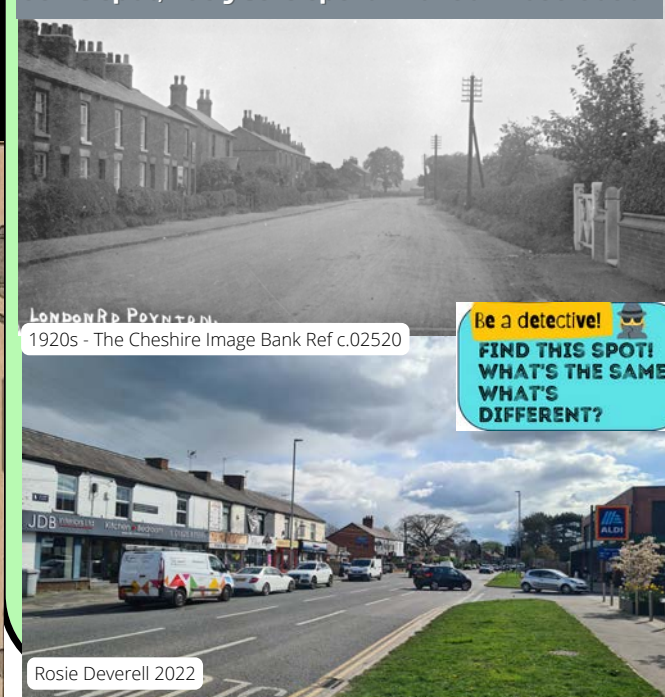
Look across the road towards the shops and takeaways on the other side of London Road South...

Same spot, 100 years apart - London Road South

Look out for the site of the former Grosvenor Garage on the corner of George's Road West (where the car garage stands)

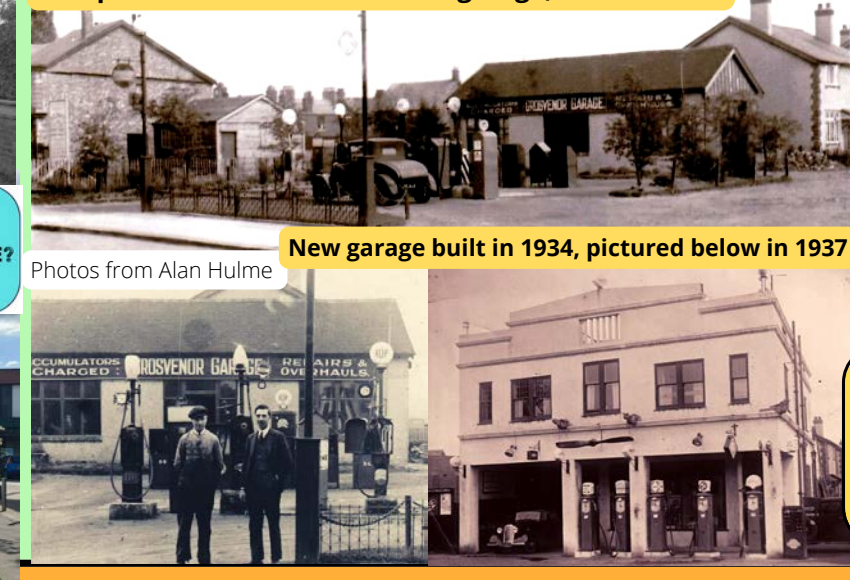
This photo and bottom left - the garage, built in 1928

On the left hand side of London Road North, before you reach Woodside, look out for the site of Poynton's old Police Station. It was built in 1904 where two rendered houses now stand, opposite the Sports Club. The Police Station moved to the new Emergency Services Hub on School Lane in 2014.



1920s - The Cheshire Image Bank Ref.c.02520

Be a detective! FIND THIS SPOT! WHAT'S THE SAME? WHAT'S DIFFERENT?



New garage built in 1934, pictured below in 1937

Photos from Alan Hulme

Have you noticed the compass on the ground at the corner of Park Avenue by the dentist? Can you find it?



A Dance at the Brookfield Cinema in the 1940s

The Cheshire Image Bank Ref.c.02553

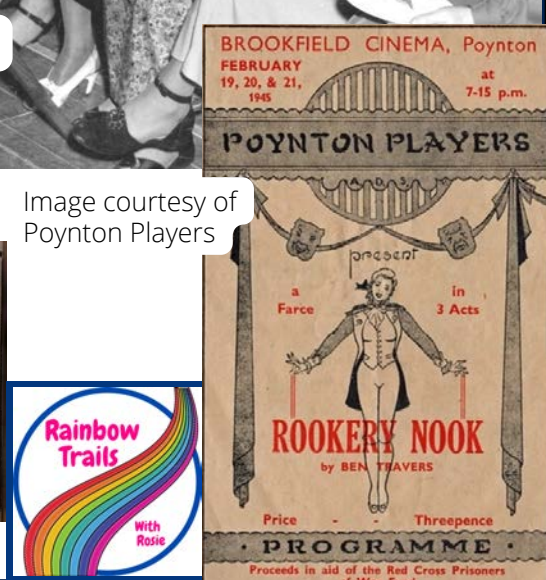


Image courtesy of Poynton Players



Image from David Kitching

With huge thanks to Rainbow Trails with Rosie for putting the trail together and Men in Sheds for making the crowns