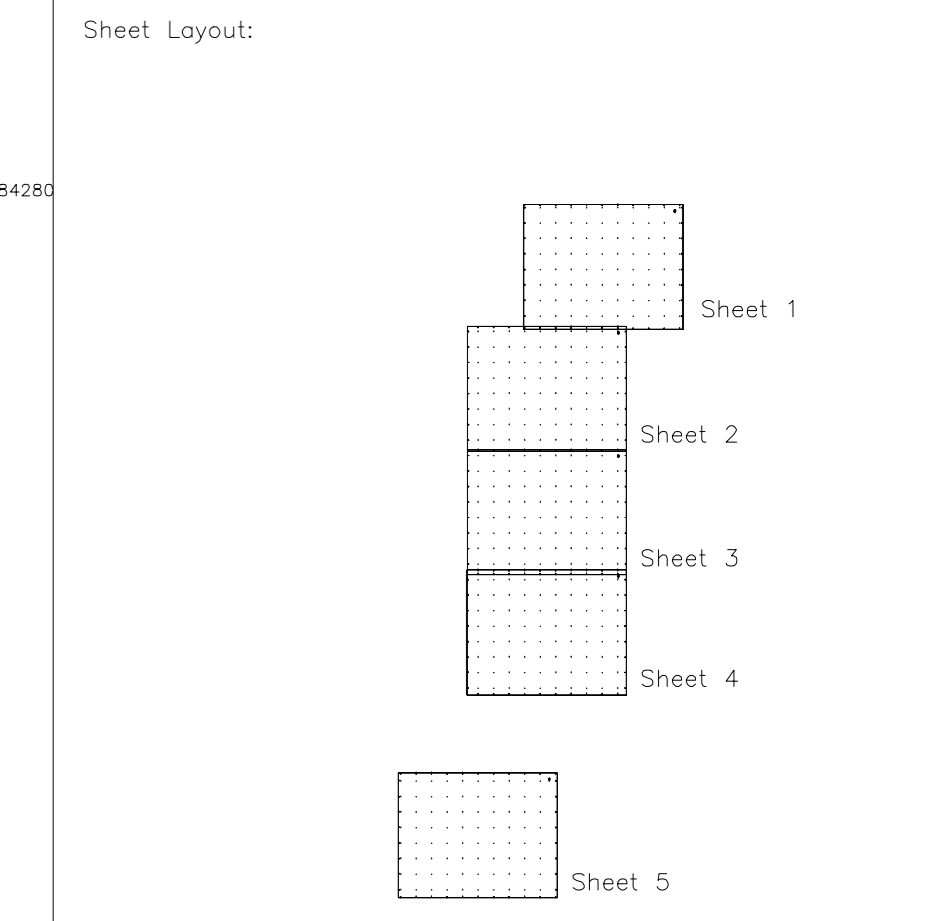


ABBREVIATIONS	
AC	Adjustment
ACC	Actual Access
AD	As Drawn
AE	As Executed
AL	As Laid
AM	As Made
AN	As Noted
AO	As Observed
AP	As Proposed
AR	As Required
AS	As Shown
AT	As Taken
AV	As Verified
AW	As Witnessed
AX	As X-rayed
AY	As Yielded
AZ	As Zoned
BA	Backsight
BB	Bench Mark
BC	Bearing
BD	Bearing and Distance
BE	Bearing and Elevation
BF	Bearing and Footing
BG	Bearing and Gradient
BH	Bearing and Height
BI	Bearing and Interval
BJ	Bearing and Junction
BK	Bearing and Level
BL	Bearing and Length
BM	Bearing and Measurement
BN	Bearing and Note
BO	Bearing and Offset
BP	Bearing and Position
BQ	Bearing and Quantity
BR	Bearing and Range
BS	Bearing and Scale
BT	Bearing and Station
BV	Bearing and Volume
BW	Bearing and Width
BX	Bearing and X-axis
BY	Bearing and Y-axis
BZ	Bearing and Z-axis
CA	Chain
CB	Chain and Bearing
CC	Chain and Distance
CD	Chain and Elevation
CE	Chain and Footing
CF	Chain and Gradient
CG	Chain and Height
CH	Chain and Interval
CI	Chain and Junction
CJ	Chain and Level
CK	Chain and Length
CL	Chain and Measurement
CM	Chain and Note
CN	Chain and Offset
CO	Chain and Position
CP	Chain and Quantity
CQ	Chain and Range
CR	Chain and Scale
CS	Chain and Station
CT	Chain and Volume
CU	Chain and Width
CV	Chain and X-axis
CW	Chain and Y-axis
CX	Chain and Z-axis
CA	Chain
CB	Chain and Bearing
CC	Chain and Distance
CD	Chain and Elevation
CE	Chain and Footing
CF	Chain and Gradient
CG	Chain and Height
CH	Chain and Interval
CI	Chain and Junction
CJ	Chain and Level
CK	Chain and Length
CL	Chain and Measurement
CM	Chain and Note
CN	Chain and Offset
CO	Chain and Position
CP	Chain and Quantity
CQ	Chain and Range
CR	Chain and Scale
CS	Chain and Station
CT	Chain and Volume
CU	Chain and Width
CV	Chain and X-axis
CW	Chain and Y-axis
CX	Chain and Z-axis
CA	Chain
CB	Chain and Bearing
CC	Chain and Distance
CD	Chain and Elevation
CE	Chain and Footing
CF	Chain and Gradient
CG	Chain and Height
CH	Chain and Interval
CI	Chain and Junction
CJ	Chain and Level
CK	Chain and Length
CL	Chain and Measurement
CM	Chain and Note
CN	Chain and Offset
CO	Chain and Position
CP	Chain and Quantity
CQ	Chain and Range
CR	Chain and Scale
CS	Chain and Station
CT	Chain and Volume
CU	Chain and Width
CV	Chain and X-axis
CW	Chain and Y-axis
CX	Chain and Z-axis

ABBREVIATIONS	
AD	As Drawn
AE	As Executed
AL	As Laid
AM	As Made
AN	As Noted
AO	As Observed
AP	As Proposed
AR	As Required
AS	As Shown
AT	As Taken
AV	As Verified
AW	As Witnessed
AX	As X-rayed
AY	As Yielded
AZ	As Zoned
BA	Backsight
BB	Bench Mark
BC	Bearing
BD	Bearing and Distance
BE	Bearing and Elevation
BF	Bearing and Footing
BG	Bearing and Gradient
BH	Bearing and Height
BI	Bearing and Interval
BJ	Bearing and Junction
BK	Bearing and Level
BL	Bearing and Length
BM	Bearing and Measurement
BN	Bearing and Note
BO	Bearing and Offset
BP	Bearing and Position
BQ	Bearing and Quantity
BR	Bearing and Range
BS	Bearing and Scale
BT	Bearing and Station
BV	Bearing and Volume
BW	Bearing and Width
BX	Bearing and X-axis
BY	Bearing and Y-axis
BZ	Bearing and Z-axis
CA	Chain
CB	Chain and Bearing
CC	Chain and Distance
CD	Chain and Elevation
CE	Chain and Footing
CF	Chain and Gradient
CG	Chain and Height
CH	Chain and Interval
CI	Chain and Junction
CJ	Chain and Level
CK	Chain and Length
CL	Chain and Measurement
CM	Chain and Note
CN	Chain and Offset
CO	Chain and Position
CP	Chain and Quantity
CQ	Chain and Range
CR	Chain and Scale
CS	Chain and Station
CT	Chain and Volume
CU	Chain and Width
CV	Chain and X-axis
CW	Chain and Y-axis
CX	Chain and Z-axis



- Notes:
- This survey is related to OSGB36 by observations to OS Net via Network RTK GNSS Technology using OSTN15.
 - This survey is related to the Ordnance Datum Newlyn (ODN) by observations to OS Net via Network RTK GNSS Technology using OSGB15.
 - All dimensions are in metres unless noted otherwise.
 - Contours are shown at 0.5m intervals. 0.1m intervals can be found in the layers manager S...CON_0.1m

Rev	Date	Description	Drawn	Checked	Rev'd	Appr'd
A	03/03/2022	Original Issue				

Jacobs
8 First Street, Manchester, M15 4GU
Tel +44(0)161 235 6000 Fax +44(0)161 235 6001
www.jacobs.com

Client: **Cheshire East Council**

Project: **Poynton Reservoir**

Drawing title: **Topographical Survey**
Sheet 4 of 5

Drawing status: **Final**

Scale: 1:200 @ A0 DO NOT SCALE

Jacobs No: BRJ10627 Rev: A

Client no: A

Drawing number: **BRJ10627_TOPO_3D_001_A**

© Copyright 2022 Jacobs U.K. Limited. The concepts and information contained in this document are the property of Jacobs U.K. Limited. This drawing has been prepared on behalf of and for the exclusive use of the client. The client accepts no liability for any errors or omissions in this drawing. This drawing has been prepared on behalf of and for the exclusive use of the client. Jacobs accepts no liability for any errors or omissions in this drawing. This drawing has been prepared on behalf of and for the exclusive use of the client. Jacobs accepts no liability for any errors or omissions in this drawing.